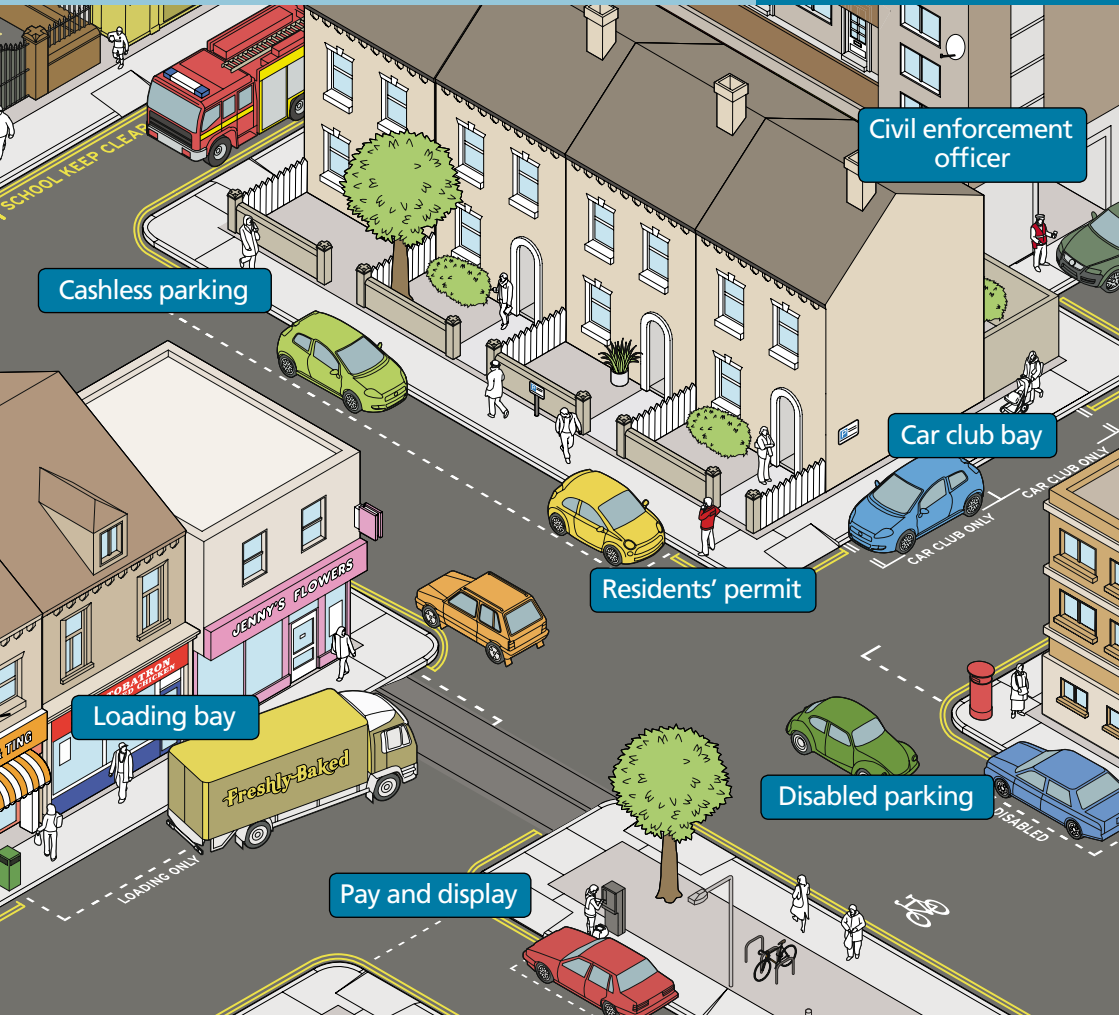


# Peckham Road south

First stage parking zone consultation

November 2012

[www.southwark.gov.uk](http://www.southwark.gov.uk)



# Why have I received this consultation pack?

The council sets out an annual programme to look at parking issues. This year, this includes a first stage parking consultation in uncontrolled streets south of Peckham Road.

Feedback from residents tells us that the parking situation has recently changed in some streets within the consultation area. This is likely to be due to the implementation of the Lucas Gardens (LG) parking zone which became operational in January 2012 following public support in that area.

As well as the introduction of the LG parking zone, it is worth considering that Camberwell has seen a significant change in parking patterns in recent years with a number of recent projects, summarised as:

**September 2006** – Your area was last consulted on a parking zone (first stage consultation only, not supportive)

**April 2009** – East Camberwell (EC) residents support a new parking zone (new zone installed north of Peckham Road)

**January 2012** – Lucas Gardens (LG) residents support a new parking zone (new zone installed south of Peckham Road, near Camberwell)

**April 2012** – East Camberwell (EC) parking zone extended in some supportive streets (extension of EC zone into Southampton Way area)

**This is a first stage consultation where a decision is made on whether parking controls should be introduced. We would consult with you again about the layout and type of parking if a decision is made to introduce parking controls in your street.**

## Parking occupancy surveys

In advance of this consultation, we have carried out spot vehicle occupancy surveys as part of the LG zone monitoring.

Our findings show that roads close to the existing LG zone are either at very high capacity (80% to 100%) or over capacity (> 100%). There are also streets within the consultation boundary that have a low to medium parking occupancy level and therefore views will vary about the need for parking controls.

30% of all vehicles parked within the project area on a weekday in April 2012 were registered to an address originating from a postcode between 2km and 30km away from the study area, this is an indicator of commuter parking.

Further information on our spot vehicle occupancy surveys can be found on our website [www.southwark.gov.uk/parking](http://www.southwark.gov.uk/parking)

A more detailed parking occupancy and duration survey has been commissioned. This will provide street-by-street data on who is parking and for how long. The results of this survey will be used as part of the evidence base at the end of this first stage consultation.

**More maps and data about your area can be found on our website.**

## This leaflet will explain:

- How you can have your say
- What will happen after the consultation closes
- How a parking zone operates and what you would need to do to be able to park in it

This information is intended to help you understand the proposals being made to change parking in your area and so you can make informed decisions when completing the accompanying questionnaire. Your opinion is very important to us so please make sure you send your questionnaire back before consultation closes on 14 December 2012.

You can submit your questionnaire online by visiting [www.southwark.gov.uk/consultations](http://www.southwark.gov.uk/consultations)

## Your views count

We are giving you the opportunity to tell us if you would like your street to be part of a parking zone. The inclusion of your road would be based on several factors including: support from local residents and businesses, parking survey results and the need to create a clear and logical parking zone boundary.

**A map showing the area being consulted is enclosed with this leaflet.**



## How can I let you know my views?

We have sent this consultation pack to all residents and businesses in the area as everybody's opinion counts. We want to hear from you even if you do not drive; parking will affect you as a pedestrian or cyclist and any visitors you receive.

The best way to give feedback is by completing the questionnaire online at [www.southwark.gov.uk/consultations](http://www.southwark.gov.uk/consultations) or by returning it to us by freepost.

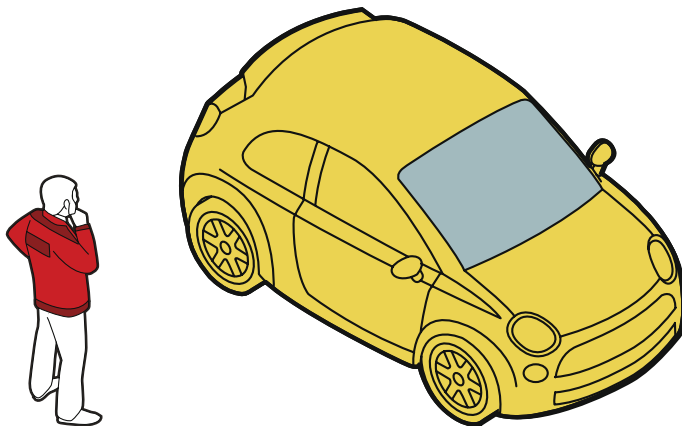
Please note that you should only respond via one method, duplicate responses will not be included in the final analysis.

**The consultation closes on 14 December 2012.**

**You can also:**

Phone: **020 7525 7764 or 020 7525 2021**

Email: [parkingreview@southwark.gov.uk](mailto:parkingreview@southwark.gov.uk)



---

## What happens after the consultation closes?

The Southwark Constitution sets out how all council decisions are made. Parking zones are considered strategic transport decisions and the final decision rests with the Cabinet Member for Transport, Environment and Recycling.

Before that decision is made, officers will analyse all the results and comments made during this consultation.

We will prepare a draft report of the findings and present this to the public meetings of Camberwell Community Council and Peckham & Nunhead Community Council in early 2013. These meetings will provide opportunity for any final feedback to the draft recommendations before the final decision is made.

If a decision is taken for parking controls to be introduced in some or all streets we will carry out a second stage consultation in those streets. We expect that consultation to take place in Spring 2013.

A second stage consultation includes discussion on the detail of the scheme, for example the position and type of parking bays and the days and times that the scheme should operate.

---

## What is a parking zone and how does it operate?

A parking zone is an area in which all on-street parking is controlled. Parking bays are painted on the road to show where it is safe to park and all other kerb lengths are marked with yellow lines. This helps keep the street safe for both drivers and other road users allowing priority for parking to be given to disabled people, residents and their visitors and local businesses.

## Parking zone layout

Although, at this stage, we are not consulting on the layout of parking (type and position of parking bays) we do appreciate that you may want to get an understanding of what this might look like in your street before responding to the questionnaire.

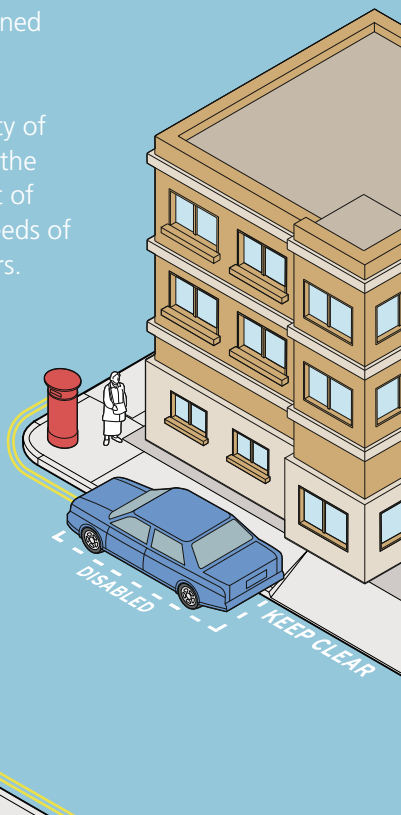
A suggested layout has been drawn and is available to view online by visiting the Peckham Road South consultation page, under parking projects at [www.southwark.gov.uk/parking](http://www.southwark.gov.uk/parking)

The suggested design is by no means a proposed parking zone for your area, it is there purely to help you with your response. We don't need your feedback on the design at this stage, this would happen if we were to progress to a second stage consultation.

## How do you balance different parking needs?

Southwark Council has established a parking priority that is detailed in our 2011 Transport Plan. It is our policy to give priority to disabled blue badge and companion badge holders, local residents and then business visitors. Parking zones are designed to deter commuters and encourage public transport use.

We are also committed to supporting the economic viability of our local businesses and to encourage growth in jobs and the regeneration of town centres. As there is a limited amount of kerb space available for parking, we aim to balance the needs of residents with those of local businesses and their customers.



## Parking controls provide benefits for the surrounding community, whether they are pedestrians, cyclists, motorists or those on buses.

- Greater ease in finding parking spaces close to home for residents and their visitors.
- Easier parking near shops, schools and other amenities within the area with nearby pay and display bays, loading bays and disabled visitors.
- Reduced traffic congestion due to less inappropriate parking as all kerb lengths will be controlled either through designated parking bays or yellow lines. Parking zones already reduce the number of vehicles driving into or through Southwark.
- A safer road environment for all motorists, cyclists and pedestrians due to less dangerous parking.
- Yellow lining at junctions will ensure better visibility and pavements will be clear of parked cars.
- Greater access for emergency vehicles, as we will be able to maintain a safe width on narrow or busy roads and powers to act on vehicles blocking access to private property.
- Improving air quality by deterring non essential car journeys and encouraging motorists to think about using a sustainable alternative to the car when walking, cycling or public transport might be quicker and more convenient.
- Assisting control on future development. Occupiers of new developments can be excluded from purchasing a permit if a parking zone surrounds the site, therefore reducing the impact on existing communities.
- Improved public realm due to the reduction of parked cars. Streets used for other purposes than just parking.

## We recognise that parking controls can also provide some disadvantages.

- Residents, businesses, visitors and shoppers need to pay for on-street parking.
- The road needs to be marked out with parking bays and there is also a need for signs and posts. We will use our Design Manual to keep clutter to an absolute minimum.
- Commuter parking may be displaced to other areas outside the parking zone.
- It does not guarantee parking space immediately outside individual properties, though evidence shows it certainly helps.
- If a vehicle is parked in contravention (e.g by not displaying a permit), the vehicle may be issued with a Penalty Charge Notice, commonly called a parking ticket.



## Frequently asked questions

### What is the difference between the first and second stage consultation?

#### First Stage Consultation

This initial consultation aims to establish whether or not there is support for a parking zone. We usually ask a large area so that everyone is aware of the consultation. Based upon the results, the council will decide whether a parking zone should be implemented in some, all or none of the streets. Before the parking zone is introduced a second stage consultation will be carried out.

#### Second Stage Consultation

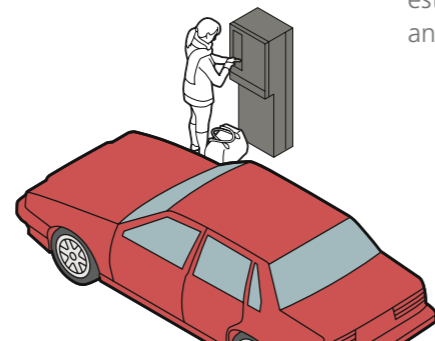
The second stage consultation aims to understand how you think the layout (type and position) of parking bays should be arranged. The results of your comments are analysed and reported before the proposals are advertised and implemented.

### Will I have to buy a parking permit if my street becomes a parking zone?

Yes, as a resident or business in the area you will need to purchase either a resident or business permit to park in the parking zone. Permits will have to be displayed at all times during the operational hours.

### When will the parking zone operate?

You will be consulted on the operational hours/days at the second stage, if a parking zone is approved for your area. However, controls are introduced that match the requirements of the area. For example town centres require longer hours of control (eg. Monday to Saturday 8.30am – 6.30pm) but areas affected by commuter parking will be successful with shorter hours (eg. Monday to Friday Noon to 2pm).



### How much will the permit cost?\*

Type of permit	Cost of permit				Discount
	1month	3months	6months	12months	
Resident	£15.74	£36.58	£67.83	£125.00	75% discount for alternative fuel vehicles or motorcycles
Business	£160.00	£320.00	£525.00		
Residents' visitors	£16 for ten, one-day permits. (1st book)				
	£36 for ten, one-day permits (2nd + book per year)				
Average pay and display charge	£2.70 per hour				n/a

\*Charges are reviewed annually. Information correct at time of going to print

### Where will my visitors park?

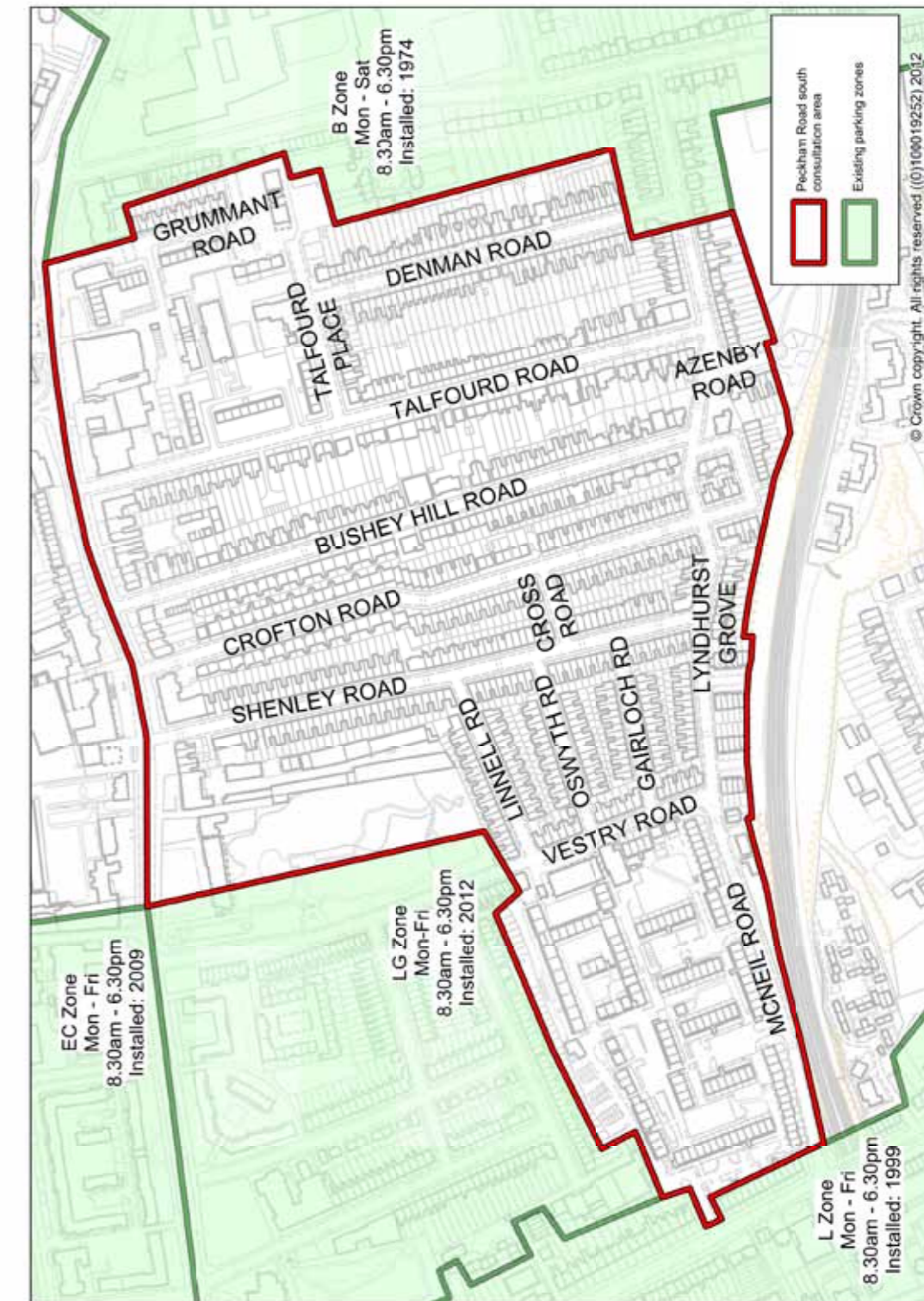
Residents are eligible to purchase 'resident-visitor' permits which allow visitors to park in any vacant resident, permit or shared-use ('pay and display' and permit) bay in the parking zone. You only need to use a visitor permit during the operational hours of the zone. Each voucher allows a whole day's parking.

### What if I have a blue badge?

Blue badge holders can park free and without time limit in all shared-use bays ('pay and display' and permits), 'pay and display' bays, on yellow lines (for a maximum of 3 hours) and in dedicated blue badge bays. The council also offers a disabled parking bay service to blue badge holders. This service continues irrespective of any new parking zone. If you don't have a blue badge bay you would need to purchase a resident parking permit.

### What if I live on an estate?

The Lettsom and Pelican estates have their own parking regulations which will remain independent from a parking zone and would not be altered as a result of this consultation. Views of the residents on the Lettsom and Pelican estates still count in this consultation and residents would be entitled to buy an on-street permit.



# Have your say about parking

The following questions should only take you a few minutes to complete and will ask you:

- A) for a few details about you
- B) about your parking experience and whether or not you support the introduction of a parking zone in your street

You can complete this consultation online at [www.southwark.gov.uk/consultations](http://www.southwark.gov.uk/consultations)

Please refer to the background document whilst completing the questionnaire.

## Section A – About you

It's important to know some details about you so that we can carefully analyse the results. To enable your comments to be matched to your street and to avoid any possible duplication of responses we need your full details. Additionally, we will be able to give greater weight to your comments if you provide us with your name and address.

1. Are you a resident or business		
<input type="radio"/> Resident	<input type="radio"/> Business	<input type="radio"/> Both
Name: required		
House / flat number: required		
Street name: required		
Postcode: required		
Email:		

## Section B – Your parking experience

2. How many vehicles do you park on the street?

- None, I park off-street     1     2 or more     I don't have a vehicle

3. Please rate the ability to find an on-street parking space near this address?

- |                  |      |   |   |   |   |   |           |
|------------------|------|---|---|---|---|---|-----------|
| a) Yourself      | Easy | 1 | 2 | 3 | 4 | 5 | Difficult |
| b) Your visitors | Easy | 1 | 2 | 3 | 4 | 5 | Difficult |

4. What time of day do you or your visitors have difficulty parking? (Tick all that apply)

- |                   |                           |                                     |
|-------------------|---------------------------|-------------------------------------|
| Mon – Fri daytime | <input type="radio"/> You | <input type="radio"/> Your visitors |
| Mon – Fri evening | <input type="radio"/> You | <input type="radio"/> Your visitors |
| Saturday          | <input type="radio"/> You | <input type="radio"/> Your visitors |
| Sunday            | <input type="radio"/> You | <input type="radio"/> Your visitors |
| Never             | <input type="radio"/> You | <input type="radio"/> Your visitors |

5. Do you want parking controls to be introduced in your street?

- Yes                       No                       Undecided

5a. If you answered 'No' or 'undecided' to parking controls in your street, please explain why: (Please tick all that apply)

- Cost of parking permits
- Parking controls do not fix the problem
- It does not guarantee parking space immediately outside my property
- There is not a commuter parking problem
- Too many resident's vehicles are causing the parking problem
- Street clutter (road markings and signage)

6. If you answered "No" or "undecided" to Q5 would you want to be reconsulted if a parking zone was introduced in an adjacent street?

*This is an important question if you don't want a parking zone at the moment but consider parking to be quite difficult – a parking zone in the road next to yours is likely to increase the demand for space in your street.*

- Yes                       No                       Undecided

7. If we progress to a second stage consultation in your street, would you be keen to join a small working group to help develop any further designs?

*If you tick yes, please ensure you have provided us with an email address. We will only contact you if we progress to a second stage consultation. Working group meetings will be held at our Tooley Street offices.*

- Yes                       No

8. Please let us know any other comments you have about this proposal or the consultation?


Replies will be used for the analysis of parking requirements in the area and for no other purpose. The information you provide will be used fairly and lawfully and Southwark Council will not knowingly do anything which may lead to a breach of the Data Protection Act 1998.

This document contains information about parking services in Southwark. If you require help with translation or other formats such as audio or large print, please visit the address below.

**Somali**  
Dokumintigaan waxaa ku qoran macluumaad ku saabsan adeegyada meesha baabuurta la dhigto ee Southwark. Haddii aad u baahan tahay in aad heshid iyadoo tarjuman ama iyadoo qaab kale ku habeysan sida maqal ahaan ama iyadoo nuqul ballaaran ku daabacan, fadlan booqo cinwaanka hoos ku xusan.

**French**  
Ce document contient des informations au sujet des services de stationnement à Southwark. Si vous avez besoin d'une traduction ou d'un autre format tel que par audio ou en gros caractères, veuillez aller à l'adresse ci-dessous.

**Spanish**  
Este documento contiene información sobre los servicios de aparcamiento en Southwark. Si usted requiere ayuda con traducción u otros formatos tales como grabación o letra grande, por favor visite la dirección abajo mencionada.

**Turkish**  
Bu belge Southwark'taki park etme servisleri hakkında bilgi içerir. Eğer tercümeyle ilgili yardıma ihtiyacınız olursa veya onu sesli yada iri harfli yazılmış olarak gibi farklı biçimlerde edinmek isterseniz, lütfen aşağıdaki adresi ziyaret ediniz.

**Arabic**  
تحتوي هذه الوثيقة على معلومات حول خدمات وقوف السيارات في بلدية سوندرك. إذا كنت تحتاج مساعدة في الترجمة أو الصيغ الأخرى مثل طباعة الصوت أو بأحرف كبيرة ، يرجى زيارة الموقع على العنوان أدناه.

**Chinese**  
这份文件包含了有關在 Southwark 停車服務的信息，如果你需要幫助翻譯，或者需要其它諸如聽力或大字體印刷品的材料，請使用以下的地址。

**Vietnamese**  
Tài liệu này bao gồm thông tin về các dịch vụ đỗ xe ở Southwark. Nếu quý vị muốn nó được dịch sang ngôn ngữ của mình hay ở dưới các hình thức khác như băng nghe hoặc chữ khổ lớn, xin hãy vào địa chỉ của chúng tôi ở bên dưới.

**Bengali**  
সাদার্ক পार्কিং সার্ভিসেস সম্পর্কে তথ্যসমূহ এই দলিলটিতে দেওয়া আছে। অনুবাদ বা অন্য ফরম্যাটে যথা অডিও বা বড় অক্ষরে এটি পাওয়ার বিষয়ে সাহায্য পেতে হলে অনুগ্রহ করে নীচে দেওয়া ঠিকানায় যাবেন।

**Walworth one stop shop**  
151, Walworth Road,  
London, SE17 1RY

**Peckham one stop shop**  
Ground floor, Peckham  
Library, 122 Peckham Hill  
Street, London SE15

**Bermondsey one stop shop**  
17 Spa Road,  
Bermondsey, London SE16

# Reminder

## Consultation closes 14 December 2012

For more information  
[www.southwark.gov.uk/parking](http://www.southwark.gov.uk/parking)  
Tel: 020 7525 7764  
or 020 7525 2021

